

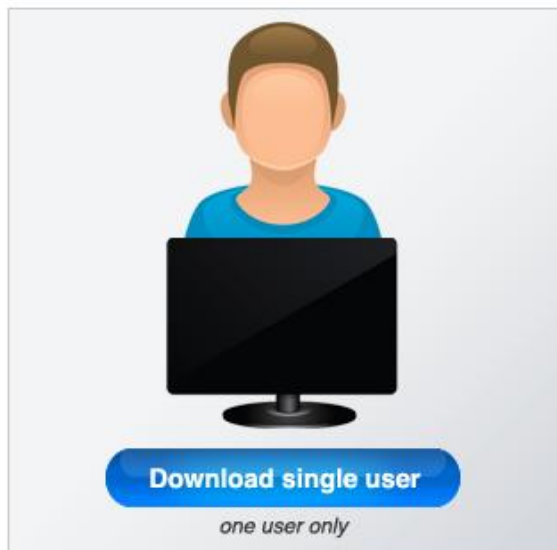
Download and Installation Instructions for RMLSFL Users



ONLINE DOWNLOAD STEPS:

1. To obtain an online download of WyldFyre7, visit <http://orders.wyldfyre.com> and choose **Regional MLS (Florida) RMLSFL** from the drop down menu. You will then be directed to the following page:

Get WyldFyre7 today!



IMPORTANT NOTE: Both single user and office version are FREE to download and install. The steps below pertain to downloading a single user; however, both processes are the same.

Choose **Download Single Users** if only one person will be using this on one or more computers. (i.e. Desktop, laptop, net book, etc.)

Choose **Download Office Version** if more than one person will access the software on one shared computer.

2. A screen will appear with a \$0.00 amount for your “order”. Choose **Purchase**. You will not be asked for any payment information, nor will you be charged for anything.
3. You will then be directed to a check out screen:

Download and Installation Instructions for RMLSFL Users



My Shopping Cart

Quantity:	Name:	Price:	Total:	Remove:
<input type="text" value="1"/>	WyldFyre 7 Single User Version	Free	Free	<input type="checkbox"/>

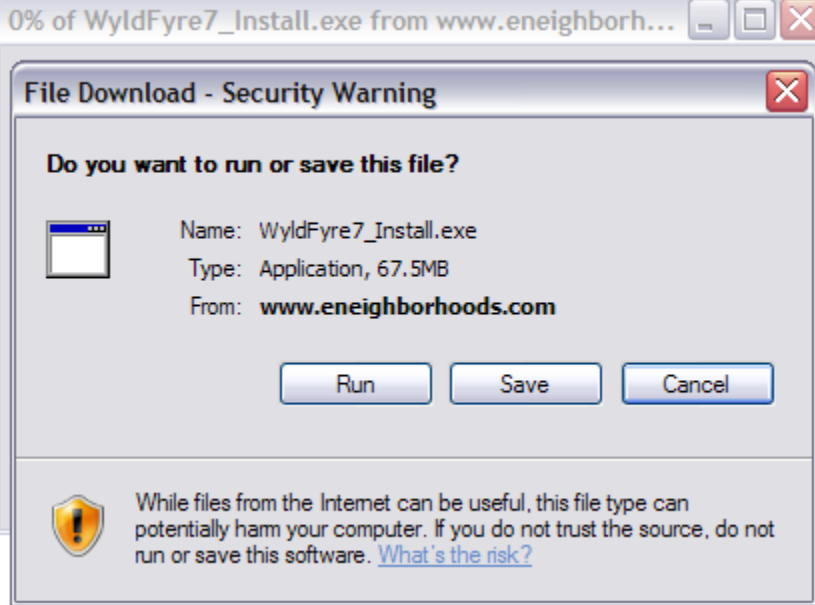
Total: \$0.00

[Update Shopping Cart](#) [Continue Shopping](#) [Cancel Order](#) [Check Out](#)

Choose **Check Out**.

4. The next screen is a registration process. **You will be considered a new user.** Please enter your desired email address, create a password, and click **Continue**.
5. You will then be asked to confirm your password and enter standard account details including address and phone number. Once you have filled in all required fields, click **Continue**.
6. Next you will be asked to confirm your order information. If all the information appears correctly, click **Continue**.
7. An Invoice screen will appear next. Choose **Process Order**.
8. The last screen is your customer receipt. **This is the most important screen!** Your receipt contains the **serial number** and **key** that will be needed to successfully install and initialize WyldFyre7 on your machine. We strongly recommend printing a copy of the receipt for your records. You will also receive an email copy of the receipt. Also, in the section titled **Order Details**, underneath your grand total of \$0.00 choose **Click Here to download WyldFyre**. You will then receive the following pop-up:

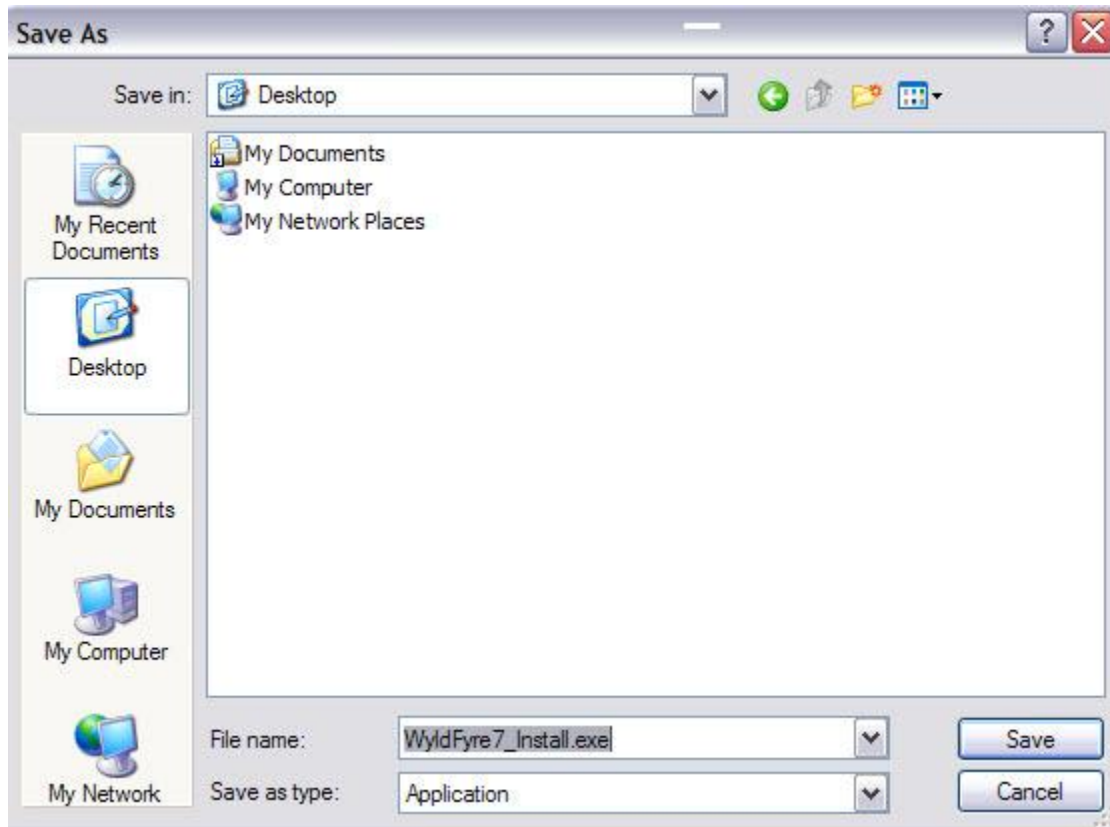
Download and Installation Instructions for RMLSFL Users



Download and Installation Instructions for RMLSFL Users



We recommend **saving** the **exe** file to your desktop:



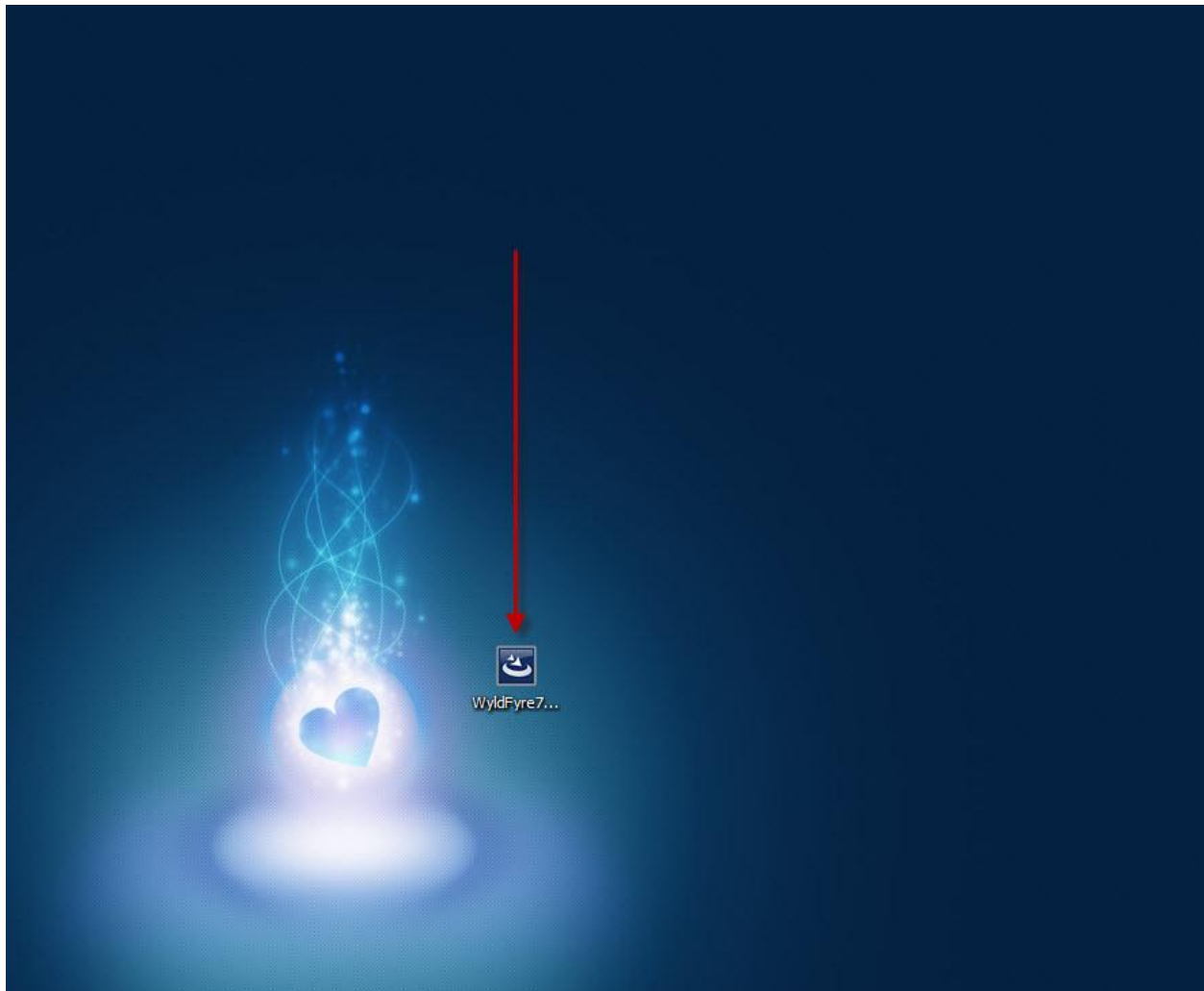
That's it! You have successfully downloaded the installer for WyldFyre7!

Download and Installation Instructions for RMLSFL Users



INSTALLATION INSTRUCTIONS:

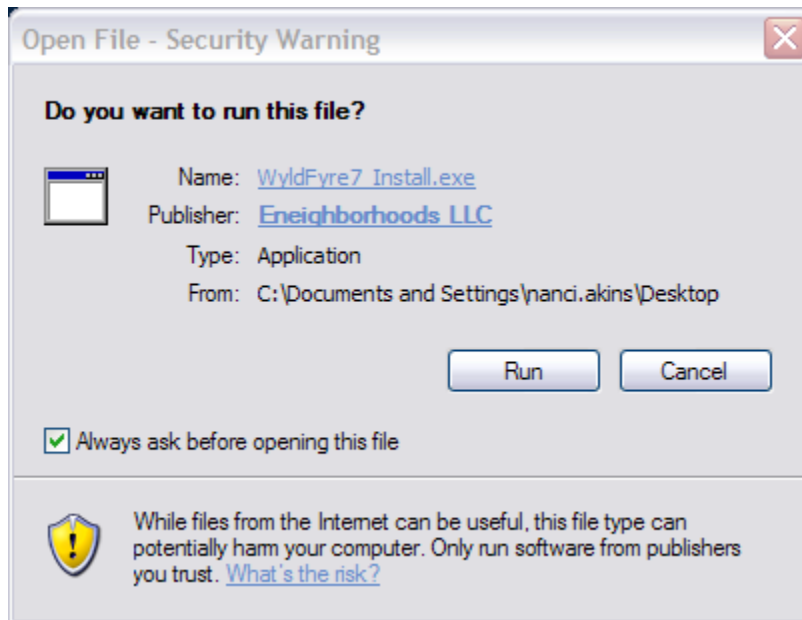
1. Go to your desktop, or the destination folder where you chose to save the WyldFyre Install.
Double click the WyldFyre7_Install.exe icon:



Download and Installation Instructions for RMLSFL Users



2. If you receive the following dialog, choose **run**:



Download and Installation Instructions for RMLSFL Users



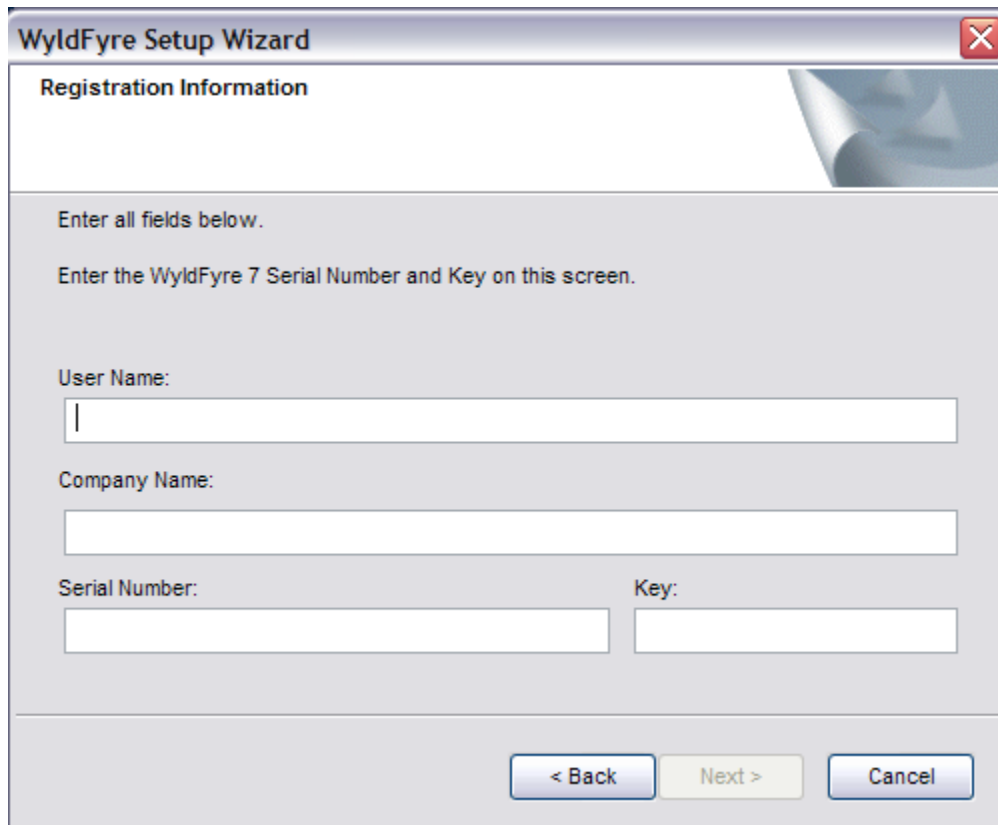
3. When the WyldFyre setup wizard begins, choose **Next**:



Download and Installation Instructions for RMLSFL Users



4. Enter your User Name, Company Name, and the **Serial Number** and **Key** from your **Customer Receipt**:



The dialog box is titled "WyldFyre Setup Wizard" and contains the following text and fields:

Registration Information

Enter all fields below.

Enter the WyldFyre 7 Serial Number and Key on this screen.

User Name:

Company Name:

Serial Number: Key:

< Back Next > Cancel

5. You should then receive a pop-up asking you to verify your registration. If the information is correct, choose **Yes**.



The dialog box is titled "Registration Verification" and contains the following text and buttons:

Please verify the following registration information:

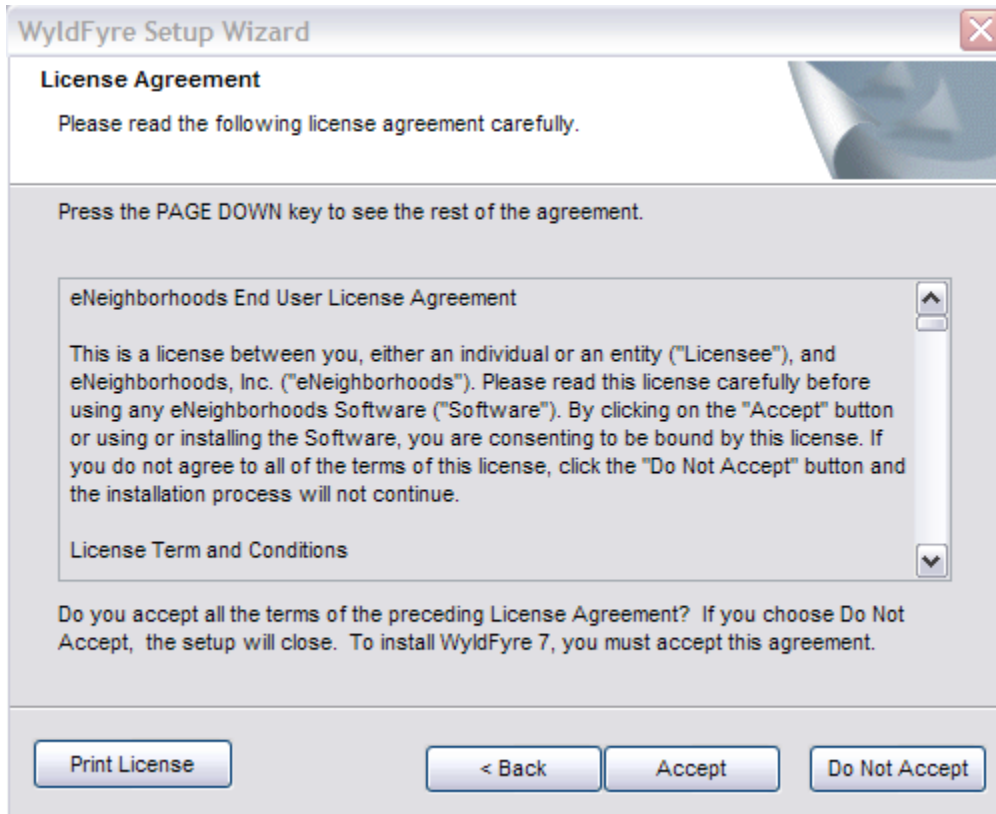
Name:
Company:
Serial Number:
Key:

Yes No

Download and Installation Instructions for RMLSFL Users



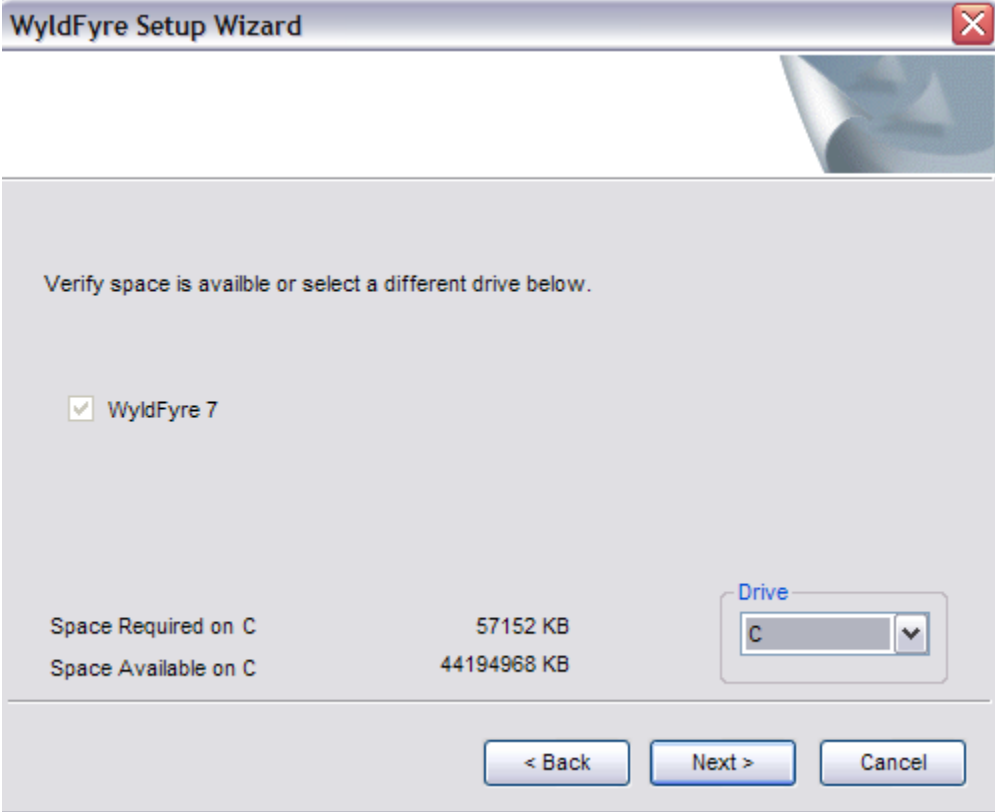
6. Accept the license agreement:



Download and Installation Instructions for RMLSFL Users



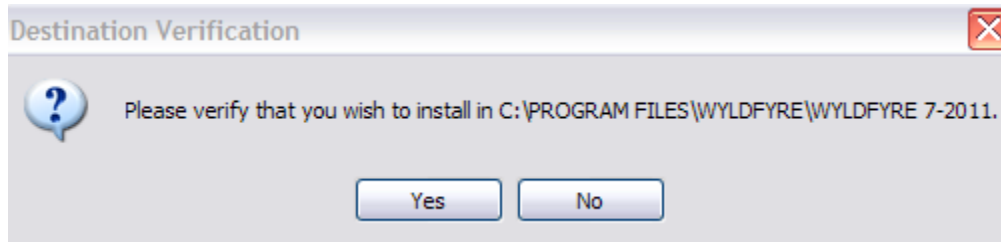
7. Verify there is enough space on your hard drive to install WyldFyre7 by choosing **Next**:



Download and Installation Instructions for RMLSFL Users



8. Verify the installation destination:



9. Now you will enter your **site code**. Your site code is **RMLSFL**.
10. You will then be asked how you connect to the internet. The most common choice is **cable modem, DSL, or LAN**. Click **Next**.
11. Following that you will be asked to verify the location for all related WyldFyre tools and accessories. Click **Next**.

That's it! You are ready to start using WyldFyre! **Please note** that upon first access of WyldFyre you will be required to step through the initialization process prior to performing a search. In addition, upon your initial search the program will perform an automatic update to bring the data current for RMLSFL.